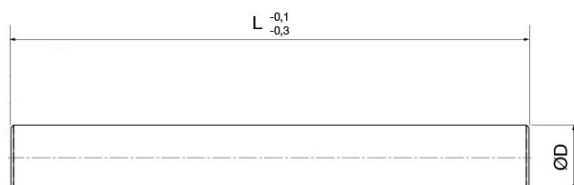


## BOR

Śruba skośna dla KOCU-S



### Opis:

Śruba skośna dla KOCU-S

### Właściwości:

Materiał bazowy

1.1213, Cf53, hartowana indukcyjnie, stal nierdzewna,  
1.4034, X40Cr13, hartowana indukcyjnie, stal nierdzewna

### Warianty:

Numer przedmiotu	Nazwa produktu	Ø zewnętrzna D		Toleranz	Basismaterial
2600300081000	BOR 8h6-1000-1.1213	8	1000	h6	1.1213
2600470081000	BOR 8h6-1000-1.4034	8	1000	h6	1.4034
260030101000	BOR 10h6-1000-1.1213	10	1000	h6	1.1213
2600470101000	BOR 10h6-1000-1.4034	10	1000	h6	1.4034
260030101000G	BOR 10g6-1000-1.1213	10	1000	g6	1.1213
260047101000G	BOR 10g6-1000-1.4034	10	1000	g6	1.4034
260030121000	BOR 12h6-1000-1.1213	12	1000	h6	1.1213
2600470121000	BOR 12h6-1000-1.4034	12	1000	h6	1.4034
260030121000G	BOR 12g6-1000-1.1213	12	1000	g6	1.1213
260047121000G	BOR 12g6-1000-1.4034	12	1000	g6	1.4034
260030161500	BOR 16h6-1500-1.1213	16	1500	h6	1.1213
260047161500	BOR 16h6-1500-1.4034	16	1500	h6	1.4034
260030161500G	BOR 16g6-1500-1.1213	16	1500	g6	1.1213
260047161500G	BOR 16g6-1500-1.4034	16	1500	g6	1.4034
260030201500	BOR 20h6-1500-1.1213	20	1500	h6	1.1213
260047201500	BOR 20h6-1500-1.4034	20	1500	h6	1.4034
260030201500G	BOR 20g6-1500-1.1213	20	1500	g6	1.1213
260047201500G	BOR 20g6-1500-1.4034	20	1500	g6	1.4034
260030251500	BOR 25h6-1500-1.1213	25	1500	h6	1.1213
260047251500	BOR 25h6-1500-1.4034	25	1500	h6	1.4034
260030251500G	BOR 25g6-1500-1.1213	25	1500	g6	1.1213
260047251500G	BOR 25g6-1500-1.4034	25	1500	g6	1.4034
260030302000	BOR 30h6-2000-1.1213	30	2000	h6	1.1213
260047302000	BOR 30h6-2000-1.4034	30	2000	h6	1.4034
260030302000G	BOR 30g6-2000-1.1213	30	2000	g6	1.1213
260047302000G	BOR 30g6-2000-1.4034	30	2000	g6	1.4034
260030352000	BOR 35h6-2000-1.1213	35	2000	h6	1.1213
260047352000	BOR 35h6-2000-1.4034	35	2000	h6	1.4034
260030352000G	BOR 35g6-2000-1.1213	35	2000	g6	1.1213

## BOR

Śruba skośna dla KOCU-S



Numer przedmiotu	Nazwa produktu	Ø zewnętrzna D		Toleranz	Basismaterial
260047352000G	BOR 35g6-2000-1.4034	35	2000	g6	1.4034
260030402000	BOR 40h6-2000-1.1213	40	2000	h6	1.1213
260047402000	BOR 40h6-2000-1.4034	40	2000	h6	1.4034
260030402000G	BOR 40g6-2000-1.1213	40	2000	g6	1.1213
260047402000G	BOR 40g6-2000-1.4034	40	2000	g6	1.4034
260030452000	BOR 45h6-2000-1.1213	45	2000	h6	1.1213
260047452000	BOR 45h6-2000-1.4034	45	2000	h6	1.4034
260030452000G	BOR 45g6-2000-1.1213	45	2000	g6	1.1213
260047452000G	BOR 45g6-2000-1.4034	45	2000	g6	1.4034