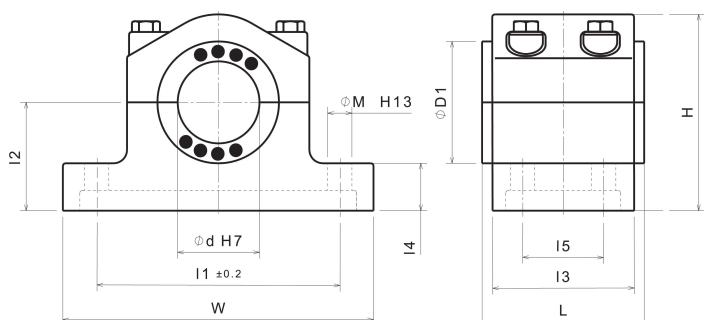


## SLB-506

Łożysko blokowe w standardzie DIN 506



### Opis:

Łożysko blokowe w standardzie DIN 506

### Właściwości:

|                         |                               |
|-------------------------|-------------------------------|
| Materiał bazowy         | Mosiądz specjalny (SO#50SP2)  |
| Samosmarujący           | Tak                           |
| Lubrykant               | Grafit                        |
| Nacisk powierzchniowy P | 100 N/mm <sup>2</sup>         |
| Prędkość ślizgu V       | 30 m/min                      |
| Wartość P*V             | 200 N/mm <sup>2</sup> x m/min |
| Temperatura pracy       | -50°C / +200°C (max. 300°C)   |
| Współczynnik tarcia     | 0,07                          |

### Warianty:

| Numer przedmiotu | Nazwa produktu | Ø wewnętrzna d | Szerokość W | Długość L | Wysokość H | D1  | I1  | I2  | I3  | I4  | I5  | M (DIN EN 20273) |
|------------------|----------------|----------------|-------------|-----------|------------|-----|-----|-----|-----|-----|-----|------------------|
| 635506055        | SLB-506-55     | 55             | 230         | 120       | 145        | 90  | 180 | 80  | 105 | 35  | 60  | 4xM16            |
| 635506060        | SLB-506-60     | 60             | 230         | 120       | 145        | 90  | 180 | 80  | 105 | 35  | 60  | 4xM16            |
| 635506070        | SLB-506-70     | 70             | 260         | 130       | 165        | 100 | 210 | 90  | 115 | 45  | 65  | 4xM16            |
| 635506080        | SLB-506-80     | 80             | 300         | 140       | 190        | 110 | 240 | 100 | 130 | 50  | 70  | 4xM20            |
| 635506090        | SLB-506-90     | 90             | 330         | 160       | 200        | 130 | 270 | 100 | 140 | 50  | 80  | 4xM20            |
| 635506100        | SLB-506-100    | 100            | 360         | 180       | 210        | 140 | 300 | 110 | 155 | 55  | 90  | 4xM24            |
| 635506110        | SLB-506-110    | 110            | 360         | 180       | 210        | 150 | 300 | 110 | 155 | 55  | 90  | 4xM24            |
| 635506120        | SLB-506-120    | 120            | 400         | 200       | 245        | 170 | 330 | 120 | 170 | 60  | 100 | 4xM24            |
| 635506125        | SLB-506-125    | 125            | 400         | 200       | 245        | 170 | 330 | 120 | 170 | 60  | 100 | 4xM24            |
| 635506130        | SLB-506-130    | 130            | 400         | 200       | 245        | 170 | 330 | 120 | 170 | 60  | 100 | 4xM24            |
| 635506140        | SLB-506-140    | 140            | 440         | 220       | 260        | 190 | 360 | 130 | 190 | 65  | 110 | 4xM30            |
| 635506150        | SLB-506-150    | 150            | 440         | 220       | 260        | 200 | 360 | 130 | 190 | 65  | 110 | 4xM30            |
| 635506160        | SLB-506-160    | 160            | 530         | 260       | 340        | 215 | 450 | 170 | 220 | 70  | 130 | 4xM30            |
| 635506180        | SLB-506-180    | 180            | 530         | 260       | 340        | 240 | 450 | 170 | 220 | 70  | 130 | 4xM30            |
| 635506200        | SLB-506-200    | 200            | 680         | 300       | 480        | 260 | 580 | 240 | 260 | 80  | 160 | 4xM30            |
| 635506220        | SLB-506-220    | 220            | 680         | 300       | 480        | 280 | 580 | 240 | 260 | 80  | 160 | 4xM30            |
| 635506240        | SLB-506-240    | 240            | 750         | 355       | 515        | 310 | 630 | 265 | 300 | 100 | 180 | 4xM36            |
| 635506260        | SLB-506-260    | 260            | 750         | 355       | 515        | 330 | 630 | 265 | 300 | 100 | 180 | 4xM36            |
| 635506280        | SLB-506-280    | 280            | 850         | 400       | 610        | 355 | 700 | 315 | 335 | 120 | 200 | 4xM42            |
| 635506300        | SLB-506-300    | 300            | 850         | 400       | 610        | 375 | 700 | 315 | 335 | 120 | 200 | 4xM42            |