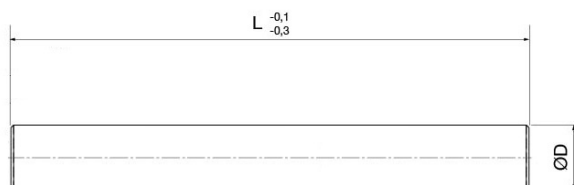


## BOR

Výkyvný čep pro KOCU-S



### Popis dílu:

Výkyvný čep pro KOCU-S

### Vlastnosti dílu:

Základní materiál

1.1213, Cf53, indukčně kalená,  
nerezová ocel, 1.4034,  
X40Cr13, indukčně kalená,  
nerezová ocel

### Tabulka rozměrů:

| Registrační číslo | Název dílu           | Vnější Ø<br>D | l    | Toleranz | Basismaterial |
|-------------------|----------------------|---------------|------|----------|---------------|
| 2600300081000     | BOR 8h6-1000-1.1213  | 8             | 1000 | h6       | 1.1213        |
| 2600470081000     | BOR 8h6-1000-1.4034  | 8             | 1000 | h6       | 1.4034        |
| 260030101000      | BOR 10h6-1000-1.1213 | 10            | 1000 | h6       | 1.1213        |
| 2600470101000     | BOR 10h6-1000-1.4034 | 10            | 1000 | h6       | 1.4034        |
| 260030101000G     | BOR 10g6-1000-1.1213 | 10            | 1000 | g6       | 1.1213        |
| 260047101000G     | BOR 10g6-1000-1.4034 | 10            | 1000 | g6       | 1.4034        |
| 260030121000      | BOR 12h6-1000-1.1213 | 12            | 1000 | h6       | 1.1213        |
| 2600470121000     | BOR 12h6-1000-1.4034 | 12            | 1000 | h6       | 1.4034        |
| 260030121000G     | BOR 12g6-1000-1.1213 | 12            | 1000 | g6       | 1.1213        |
| 260047121000G     | BOR 12g6-1000-1.4034 | 12            | 1000 | g6       | 1.4034        |
| 260030161500      | BOR 16h6-1500-1.1213 | 16            | 1500 | h6       | 1.1213        |
| 260047161500      | BOR 16h6-1500-1.4034 | 16            | 1500 | h6       | 1.4034        |
| 260030161500G     | BOR 16g6-1500-1.1213 | 16            | 1500 | g6       | 1.1213        |
| 260047161500G     | BOR 16g6-1500-1.4034 | 16            | 1500 | g6       | 1.4034        |
| 260030201500      | BOR 20h6-1500-1.1213 | 20            | 1500 | h6       | 1.1213        |
| 260047201500      | BOR 20h6-1500-1.4034 | 20            | 1500 | h6       | 1.4034        |
| 260030201500G     | BOR 20g6-1500-1.1213 | 20            | 1500 | g6       | 1.1213        |
| 260047201500G     | BOR 20g6-1500-1.4034 | 20            | 1500 | g6       | 1.4034        |
| 260030251500      | BOR 25h6-1500-1.1213 | 25            | 1500 | h6       | 1.1213        |
| 260047251500      | BOR 25h6-1500-1.4034 | 25            | 1500 | h6       | 1.4034        |
| 260030251500G     | BOR 25g6-1500-1.1213 | 25            | 1500 | g6       | 1.1213        |
| 260047251500G     | BOR 25g6-1500-1.4034 | 25            | 1500 | g6       | 1.4034        |
| 260030302000      | BOR 30h6-2000-1.1213 | 30            | 2000 | h6       | 1.1213        |
| 260047302000      | BOR 30h6-2000-1.4034 | 30            | 2000 | h6       | 1.4034        |
| 260030302000G     | BOR 30g6-2000-1.1213 | 30            | 2000 | g6       | 1.1213        |
| 260047302000G     | BOR 30g6-2000-1.4034 | 30            | 2000 | g6       | 1.4034        |
| 260030352000      | BOR 35h6-2000-1.1213 | 35            | 2000 | h6       | 1.1213        |
| 260047352000      | BOR 35h6-2000-1.4034 | 35            | 2000 | h6       | 1.4034        |
| 260030352000G     | BOR 35g6-2000-1.1213 | 35            | 2000 | g6       | 1.1213        |

## BOR

Výkyvný čep pro KOCU-S



| Registrační číslo | Název dílu           | Vnější ø<br>D | l    | Toleranz | Basismaterial |
|-------------------|----------------------|---------------|------|----------|---------------|
| 260047352000G     | BOR 35g6-2000-1.4034 | 35            | 2000 | g6       | 1.4034        |
| 260030402000      | BOR 40h6-2000-1.1213 | 40            | 2000 | h6       | 1.1213        |
| 260047402000      | BOR 40h6-2000-1.4034 | 40            | 2000 | h6       | 1.4034        |
| 260030402000G     | BOR 40g6-2000-1.1213 | 40            | 2000 | g6       | 1.1213        |
| 260047402000G     | BOR 40g6-2000-1.4034 | 40            | 2000 | g6       | 1.4034        |
| 260030452000      | BOR 45h6-2000-1.1213 | 45            | 2000 | h6       | 1.1213        |
| 260047452000      | BOR 45h6-2000-1.4034 | 45            | 2000 | h6       | 1.4034        |
| 260030452000G     | BOR 45g6-2000-1.1213 | 45            | 2000 | g6       | 1.1213        |
| 260047452000G     | BOR 45g6-2000-1.4034 | 45            | 2000 | g6       | 1.4034        |