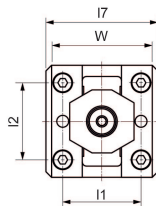
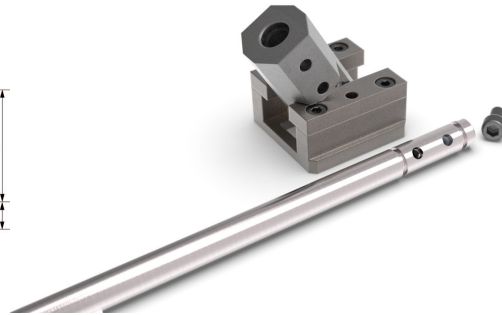
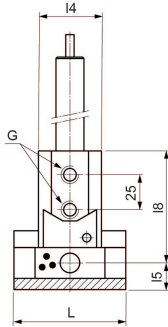
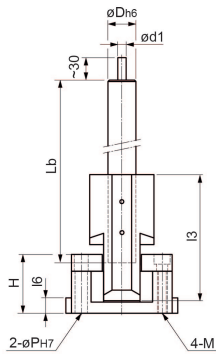


KOCU-KE

Inclined ejector unit, bolt included



Product description:

Inclined ejector unit, bolt included

Article properties:

Self-lubricating	Yes
Lubricant	Graphite

Variants:

Articlenumber	Article name	Bolt ϕ D	Width W	Length L	Bolt length L_b	Height H	I1	I2	I3	I4	I5	I6	I7	I8	M (ISO 4762)	G (ISO 8734)	P (ISO 8734)	Stroke	O-ring
26009016	KOCU-KE-16-700	16	58	65	700	36	46	40	65	40	16	8	65	77	4xM6	M10x1	6	25	$\phi 12,42 \times 1,78$
26009017	KOCU-KE-16-1000	16	58	65	1000	36	46	40	65	40	16	8	65	77	4xM6	M10x1	6	25	$\phi 12,42 \times 1,78$
26009020	KOCU-KE-20-700	20	72	80	700	42	56	55	65	45	19	11	80	80	4xM8	M10x1	8	30	$\phi 15,54 \times 2,62$
26009021	KOCU-KE-20-1000	20	72	80	1000	42	56	55	65	45	19	11	80	80	4xM8	M10x1	8	30	$\phi 15,54 \times 2,62$
26009025	KOCU-KE-25-700	25	85	90	700	50	66	65	78	52	22	15	93	90	4xM10	M10x1	10	35	$\phi 20,30 \times 2,62$
26009026	KOCU-KE-25-1000	25	85	90	1000	50	66	65	78	52	22	15	93	90	4xM10	M10x1	10	35	$\phi 20,30 \times 2,62$
26009030	KOCU-KE-30-700	30	93	100	700	55	74	70	78	52	25	15	101	88	4xM10	M10x1	10	40	$\phi 25,07 \times 2,62$
26009031	KOCU-KE-30-1000	30	93	100	1000	55	74	70	78	52	25	15	101	88	4xM10	M10x1	10	40	$\phi 25,07 \times 2,62$