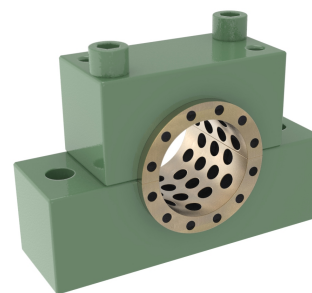
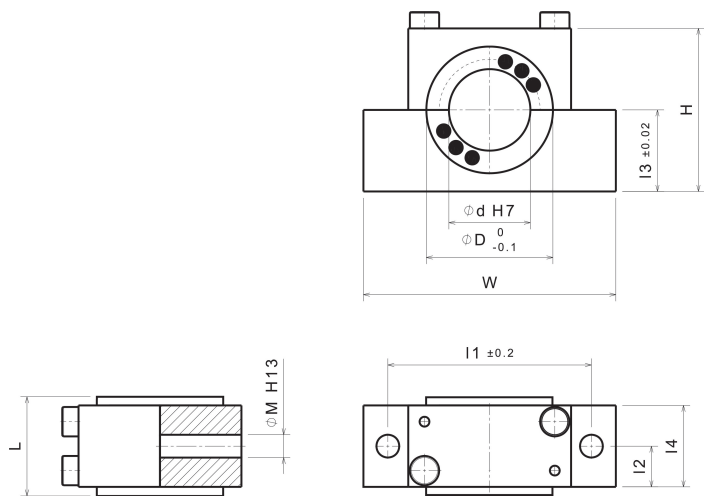


BOT

Pillow block bearing, SOBB2 seperable bush with integrated thrust washers



Product discription:

Pillow block bearing, SOBB2 seperable bush with integrated thrust washers

Article properties:

Base Material	Special Brass (SO#50SP2)
Self-lubricating	Yes
Lubricant	Graphite
Surface Pressure P	100 N/mm ²
Sliding speed v	30 m/min
P*v-value	200 N/mm ² x m/min
Operating temperature	-50°C / +200°C (max. 300°C)
Friction coefficient	0,07

Variants:

Articlenumber	Article name	Inner \varnothing d	Width W	Length L	Height H	D1	I1	I2	I3	I4	M (DIN EN 20273)
63500146	BOT-20	20	85	28	40	35	62	10	20	20	2xM6
63500147	BOT-25	25	100	33	50	40	75	12,5	25	25	2xM8
63500148	BOT-30	30	110	40	60	48	85	15	30	30	2xM8
63500149	BOT-40	40	130	50	70	60	105	20	40	40	2xM10
63500150	BOT-50	50	155	60	100	68	125	25	50	50	2xM12