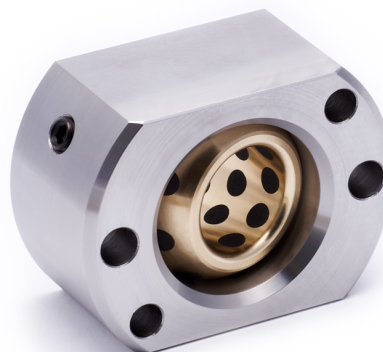
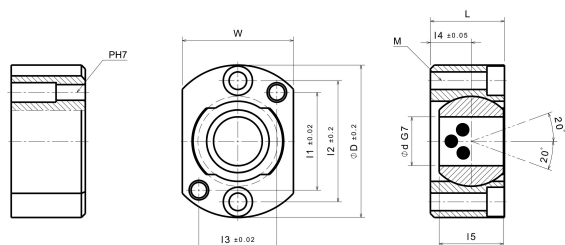


MTGH

Spherical bearing for inclined ejector units (for large moulds)



Product description:

Spherical bearing for inclined ejector units (for large moulds)

Article properties:

Base Material	Special Brass (SO#50SP2)
Self-lubricating	Yes
Lubricant	Graphite
Surface Pressure P	100 N/mm ²
Sliding speed v	30 m/min
P*v-value	200 N/mm ² x m/min
Operating temperature	-50°C / +200°C (max. 300°C)
Friction coefficient	0,07

Variants:

Articlenumber	Article name	Inner Ø d	Outer Ø D	Width W	Length L	I1	I2	I3	I4	I5	M (ISO 4762)	P (ISO 8734)	Supplies
260050250	MTGH 25	25	85	57	42	50	64	42	21	33	2xM10	2xØ8	NH10
260050300	MTGH 30	30	94	65	48	55	72	48	24	37	2xM10	2xØ8	NH10
260050350	MTGH 35	35	98	72	54	60	78	52	27	40	2xM10	2xØ8	NH10
260050400	MTGH 40	40	106	77	58	65	84	55	29	44	2xM10	2xØ8	NH10
260050500	MTGH 50	50	124	88	66	78	102	65	33	48	2xM12	2xØ10	NH12