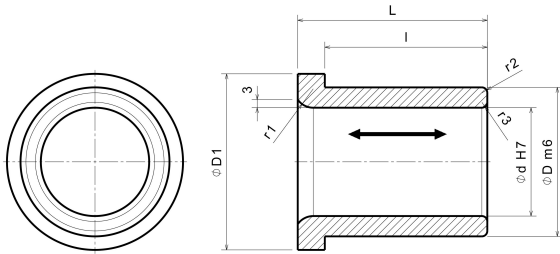


SESB

Bearing and guide bush



Product description:

Bearing and guide bush

Article properties:

Base Material	Special Brass (SO#50SP2)
Self-lubricating	Yes
Lubricant	Graphite
Surface Pressure P	100 N/mm ²
Sliding speed v	30 m/min
P*v-value	200 N/mm ² x m/min
Operating temperature	-50°C / +200°C (max. 300°C)
Friction coefficient	0,07

Variants:

Articlenumber	Article name	Inner \varnothing d	Outer \varnothing D	Length L	D1	l	r1	r2	r3
14351001	SESB 25-35-40	25	35	40	45	33	10	1	2
14351002	SESB 30-40-50	30	40	50	50	40	20	1	2
14351003	SESB 40-55-70	40	55	70	65	60	20	2	2
14351004	SESB 50-65-80	50	65	80	75	70	20	2	2
14351005	SESB 60-75-80	60	75	80	85	70	20	2	2
14351061	SESB 65-80-80	65	80	80	90	70	20	2	2
14351062	SESB 65-80-120	65	80	120	90	110	20	2	2
14351071	SESB 80-100-100	80	100	100	110	90	20	2	3
14351072	SESB 80-100-140	80	100	140	110	130	20	2	3
14351081	SESB 100-120-100	100	120	100	130	90	20	2	3
14351082	SESB 100-120-140	100	120	140	130	130	20	2	3